

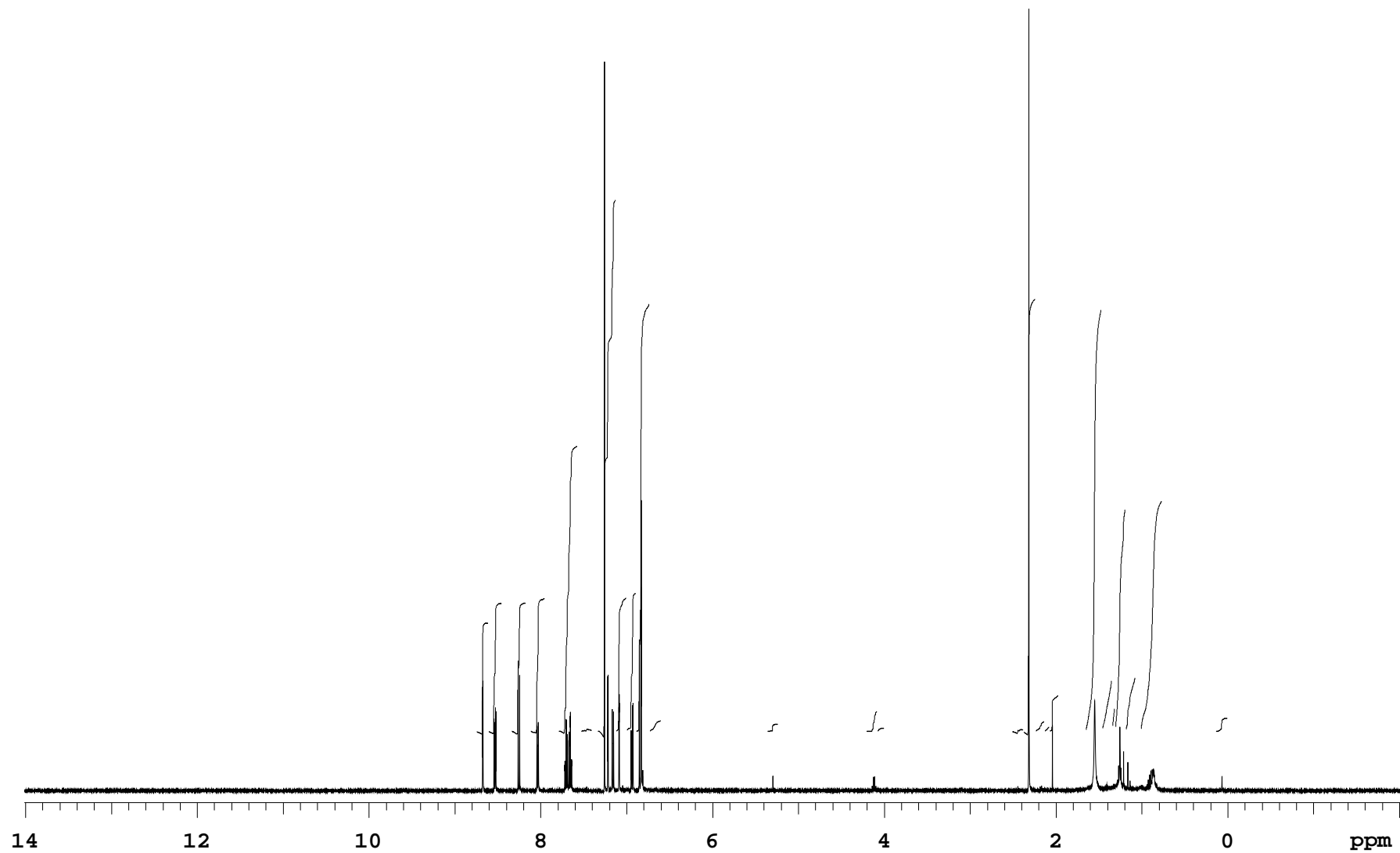
mlo-krt36_dry

Sample Name **mlo-krt36_dry**
Date collected **2018-07-02**

Pulse sequence **PROTON**
Solvent **cdcl3**

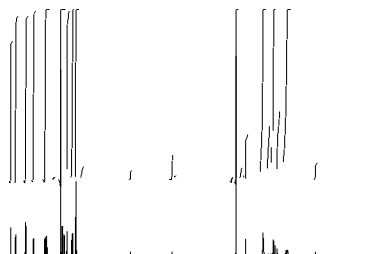
Temperature **25**
Spectrometer **chpc-nmr500a-vnmrs500**

Study owner **mlo22**
Operator **mlo22**



mlo-krt36_dry

Sample Name	mlo-krt36_dry	Pulse sequence	PROTON	Temperature	25	Study owner	mlo22
Date collected	2018-07-02	Solvent	cdcl3	Spectrometer	chpc-nmr500a-vnmrs500	Operator	mlo22



INTEGRAL VALUES

Integral	start(ppm)	end	value
1	8.75245	8.60917	3.030
2	8.60868	8.45121	3.586
3	8.33972	8.17247	3.596
4	8.11868	7.95143	3.730
5	7.7925	7.57097	8.006
6	7.52892	7.40373	0.029
7	7.3382	7.12254	14.919
8	7.12205	7.00273	3.760
9	7.00224	6.89123	3.877
10	6.89123	6.73181	12.002
11	6.73181	6.60026	0.300
12	5.36401	5.23344	0.205
13	4.20551	4.08081	0.554
14	4.08033	4.00208	0.094
15	2.51007	2.38048	0.038
16	2.37999	2.23866	12.128
17	2.23817	2.13401	0.283
18	2.13352	2.07533	0.118
19	2.07484	1.97361	1.013
20	1.65477	1.46747	11.879
21	1.46698	1.34864	1.466
22	1.34815	1.31099	0.742
23	1.3105	1.18824	6.281
24	1.18775	1.07528	1.522
25	1.01219	0.76328	6.482
26	0.136842	0.00284932	0.363

SAMPLE

date Jul 2 2018
solvent cdcl3
file /home/bath/vnmrsys
/data/mlo22/mlo-krt36_dr
y_20180702_01/PROTON_01.
fid

PRESATURATION

satmode n
wet n

SPECIAL

temp 25.0
gain 54
spin 0
hst 0.008
pw90 7.800
alfa 10.000

ACQUISITION

sw 8012.8
at 2.045
np 32768
fb 4000
bs 32
d1 1.000
nt 8
ct 8

FLAGS

il n
in n
dp y
hs nn

TRANSMITTER

tn H1
sfrq 500.060
tof 500.0
tpwr 60
pw 3.900

PROCESSING

fn 65536

DISPLAY

sp -1005.8
wp 8012.6
rfi 1006.1
rfp 0
rp -62.5
lp 0

DECOUPLER

dn 0
dof 0
dm nnn
decwave W40_OneNMR
dpwr 38
dmf 32258

PLOT

wc 234
sc 8
vs 39
th 44
ai cdc ph

Plotname: PROTON_01_plot01

Data file /home/bath/vnmrsys/data/mlo22/mlo-krt36_dry_20180702_01/PROTON_01.fid

Plot date 2018-07-02